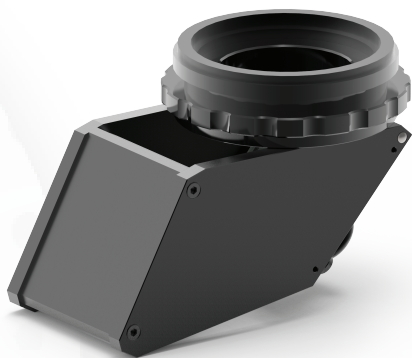


360° ROTATING VIEWER

AI 801-458



KEY FEATURES

- Inspect objects with a full 360° rotating view without having to manipulate the sample.
- The rotating viewer easily attaches to the standard Ash +5 lens.
- Mirror hatch can be opened, allowing standard inspection.
- Useful for inspecting electronic components, medical devices, mould cavities and metal cutting tools

SPECIFICATIONS

WEIGHT	0.25 Kg
DIAMETER	155MM (SPINNING DIAMETER) 67MM (DIAL DIAMETER)
HEIGHT	82MM (WITH +5 LENS) 69MM (WITHOUT +5 LENS)
INCLINED VIEWING ANGLE	28 °
WORKING HEIGHT	70 mm
MIN. FIELD OF VIEW	33 mm x 20 mm (APPROX.)

